

**outperform**  
in government  
solving central and local challenges



**breakthrough**  
in better healthcare  
transforming outcomes and economics



**rebalancing**  
the transport equation  
integrated thinking for sustainable networks



# Text Analytics and Big Data

**META-FORUM 2012**  
**Brussels, 20<sup>th</sup> June 2012**



**mission**  
accomplished  
new outcomes for defence and security



**shaping**  
the future with education  
foundations for 21st century learning



**Tomás Pariente**  
**Atos Research & Innovation**

**Atos**  
Worldwide IT Partner



---

# Table of Contents

---

20/06/2012  
Tomás Pariente



1. Atos and why we are here
2. Examples
3. BIG: Big Data Public Private Forum

# Atos: The company

20/06/2012  
Tomás Pariente



Atos is an international **information technology services company**, delivering **hi-tech transactional services**, consulting, systems integration and managed services.



- ▶ Annual revenues of € 8,7 billion (pro-forma 2010).
- ▶ Over 78,500 business technologists worldwide in 42 countries.
- ▶ Worldwide headquarters in Bezons / Paris, France.
- ▶ Established on July 2011 with the integration of Atos Origin and Siemens IT Solutions and Services



# Atos: From critical IT to business support

20/06/2012  
Tomás Pariente



# Atos: From vision to Innovation

20/06/2012  
Tomás Pariente



*Innovation is in our company DNA*

Innovation can be seen everywhere and particularly:

- ▶ in our set of Innovative Offerings growing over 10% a year.
- ▶ in our innovation policy involving every single employee's ideas through our social platforms.
- ▶ in the works of our scientific community actively upgrading our vision of the technologies for the future.
- ▶ in **the Research and Innovation group of Atos**, applying the latest research results to opportunities where clients need solutions that go beyond market's offer.

This is how we are able to constantly propose new solutions and ideas to our clients, and to help them invent their own new way towards growth and profitability.



# Atos Research & Innovation Main Activities

20/06/2012  
Tomás Pariente



## Atos Research & Innovation

Come with us to the  
future of technologies



- ▶ Atos R&D hub
- ▶ Involved in projects that combine advanced technological developments with commercial exploitation
- ▶ Usually working in international partnerships
- ▶ A source of innovative ideas to be used by the company's sales and technical staff

R&D&I since 1987

180 ongoing Projects

Of which, 105 EU R&D&I

### Research »

- ▶ Project management
- ▶ Technical consulting
- ▶ Technology development
- ▶ Market studies & project results exploitation plans

### Innovation »

- ▶ Bring research outcomes to Atos' customers
- ▶ Support the sales force as "technical backstage"
- ▶ Business development

### Consulting »

- ▶ Strategic R&D&I consulting
- ▶ Emerging technologies expertise
- ▶ Technology watch

R&D  
&I

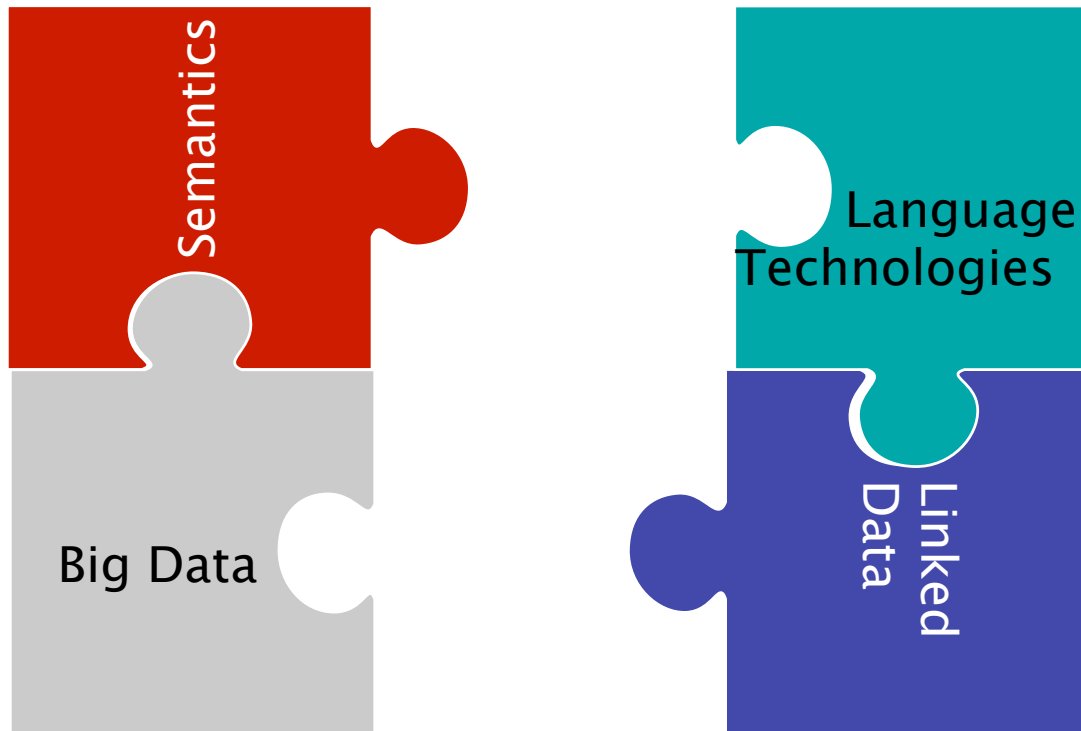
# Atos Research & Innovation

## Why we are here: Knowledge Lab

20/06/2012  
Tomás Pariente



- ▶ Main capabilities:
  - Semantic Technologies
  - Language Technologies
  - Big Data
  - Linked Data



*“Big Data and  
Semantics”*

***BIG Project***



---

# Table of Contents

---

20/06/2012  
Tomás Pariente

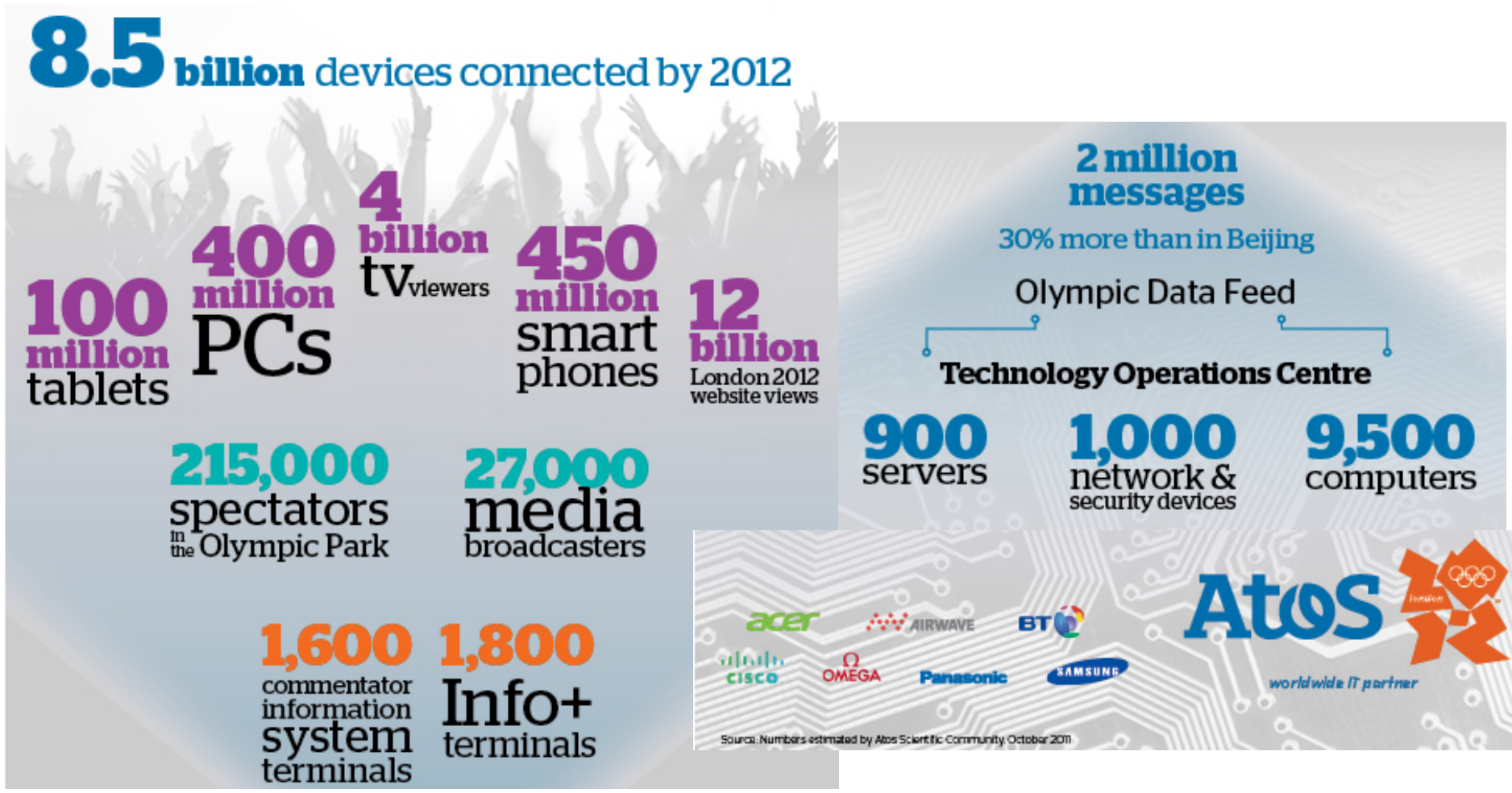


1. Atos and why we are here
2. Examples
3. BIG: Big Data Public Private Forum



# A use case in Atos: Olympic Games (increasing demand of data processing, storage and innovative applications)

20/06/2012  
Tomás Pariente



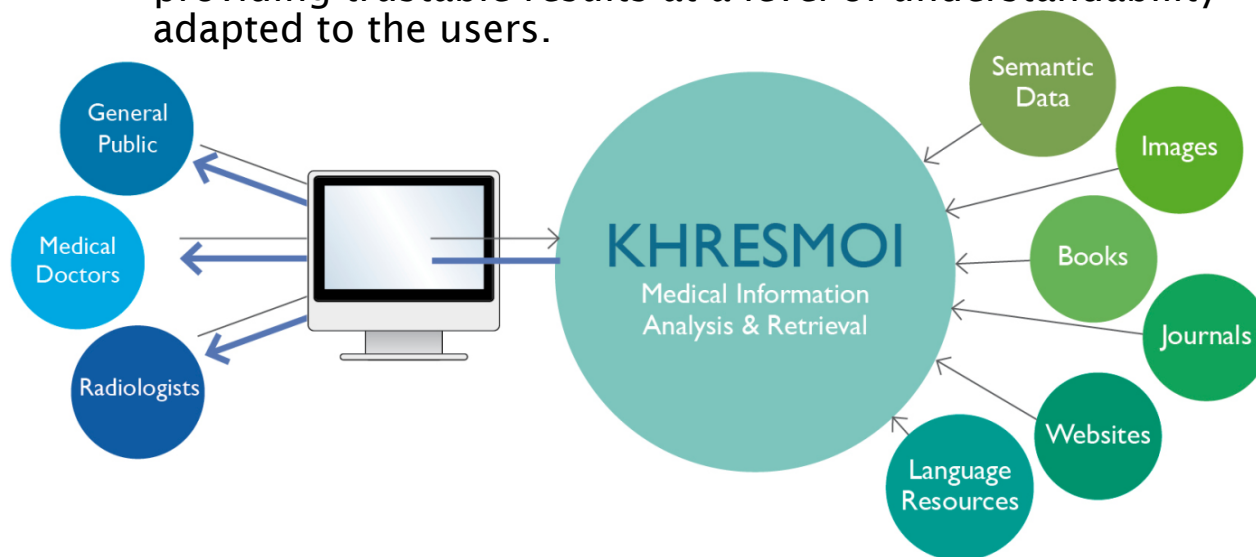
# Khresmoi Project

20/06/2012  
Tomás Pariente



► KHRESMOI aims to build a **multi-lingual, multi-modal search** and access system **for biomedical information** and documents. The system will allow access to biomedical data:

- from many sources,
- analyzing and indexing multi-dimensional (2D, 3D, 4D) medical images,
- with improved search capabilities due to the integration of technologies to link the texts and images to facts in a knowledge base,
- **in a multi-lingual environment,**
- providing trustable results at a level of understandability adapted to the users.



Integrated Project

Sep 2010 - Aug 2014

<http://www.khresmoi.eu/>



# A growing universe of unstructured data

20/06/2012  
Tomás Pariente



... created and accessible from almost everywhere



# A growing universe of unstructured data

20/06/2012  
Tomás Pariente



CalculatedRISK  
FINANCE & ECONOMICS

About | Advertising | Email CR | Graph Galleries | Tanta | Web

SUNDAY, JANUARY 15, 2012

Europe: Greek Debt talks

by CalculatedRisk on 1/15/2012 09:43:00 AM

From BUSINESS INSIDER

Home Tech Entertainment Wall Street

Hive Tape Blackboard Contributors | C

Charts

Other Charts » All Charts Housing Stocks Startups Retail Sports

This chart of the day, trade deficit t

MoneyGame

Trade deficit, in millions

YOY Change In Trade

\$30,000

\$20,000

\$10,000

The Engage-O-Meter

... ¿cómo separar el grano de la paja ?



... how to separate the wheat from the chaff ?

trader.net


22

(PL+) or use the voting  
TweetTrader.net

Tweet

Industry..

nt... pull back Friday  
t over 27.50





*is to **make available the relevant information**  
of the **financial information space**  
(including unreliable, unstructured, sentiment sources)  
**to the decision maker in near-real time**  
in an automated way*

<http://project-first.eu>

# FIRST

## Mining the Web for financial texts

20/06/2012  
Tomás Pariente



W E B

Social media  
BLOG  
NEWS  
twitter



# FIRST

### Some numbers

- 176 Web sites
- 2,671 RSS sources
- ~40,000 documents per day
- > 8,000,000 documents and growing
- ~13,000 tweets per weekday, for ~1,800 NASDAQ/NYSE stocks (\$GOOG, \$MSFT...)

Natural Language preprocessing and entity extraction



Streaming

Cleaning

CONTENT



HTML



Financial terms, Companies, Instruments ...

Sentiment



DSS



About Financial objects



# Table of Contents

20/06/2012  
Tomás Pariente



1. Atos and why we are here
2. Examples
3. BIG: Big Data Public Private Forum

# BIG: Key facts

20/06/2012  
Tomás Pariente



- ▶ Type of project: Coordination Action (CA)
- ▶ Duration: 26 months
- ▶ August 2012 – October 2014
- ▶ Budget: 3,055 Meuro
- ▶ Funding: 2,5 Meuro
- ▶ Consortium: 11 partners

## Overall objective

Address **technical, business and policy** aspects of **Big Data** with the aims of shaping the future of the area, positioning it in **H2020** and bringing the necessary **stakeholders** into a self-sustainable **industrially-led initiative to enhance EU competitiveness** taking full advantage of Big Data.



Open Knowledge Foundation



PRESS ASSOCIATION

SIEMENS







## ► Main Missions

1. Build a self-sustainable Industrial community around Big Data in Europe
  - **Technical level** establishing the proper channels to gather information
  - **industrially-led initiative** to influence adequately the decision makers
2. Promote adoption of earlier waves of big data technology
3. Tackle adequately existing barriers such as policy and regulation issues

## ► Concrete Objectives (and outputs from BIG project)

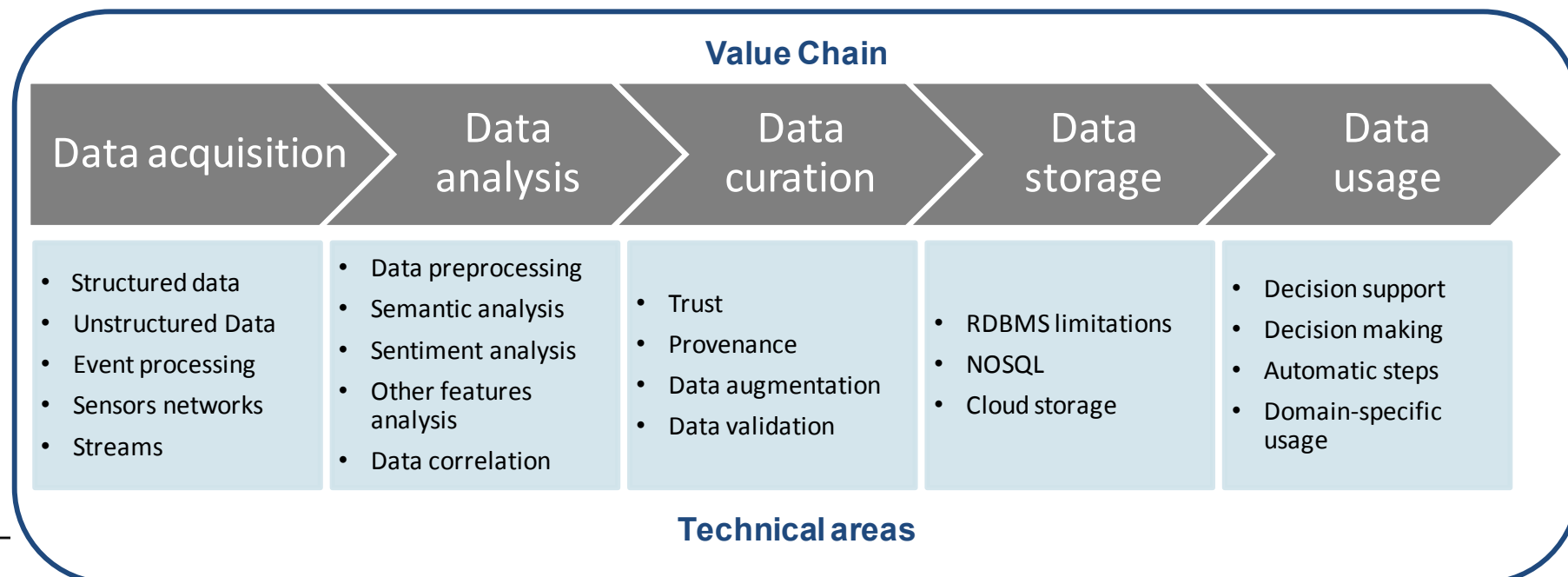
- **Define Stakeholders and players** in the value chain (D2.3 Sector's Requisites).
- Elaborate **a clear picture of existing technological trends and their maturity** (D2.2 Technical white papers )
- Acquire a **sharp understanding of how big data can be applied** to concrete environments/sectors (D2. 4 Sector's Roadmap )
- **Disseminate results and involve** different stakeholders (D3.4 Project Dissemination Reports and D3.5 Stakeholder engagement activities)
- **Define priorities based on expected impact** (D.2.5 Integrated Roadmap )
- **Contribute to EU competitiveness and position** it in Horizon 2020 (D4.2 IPR, Standardization Recommendations)

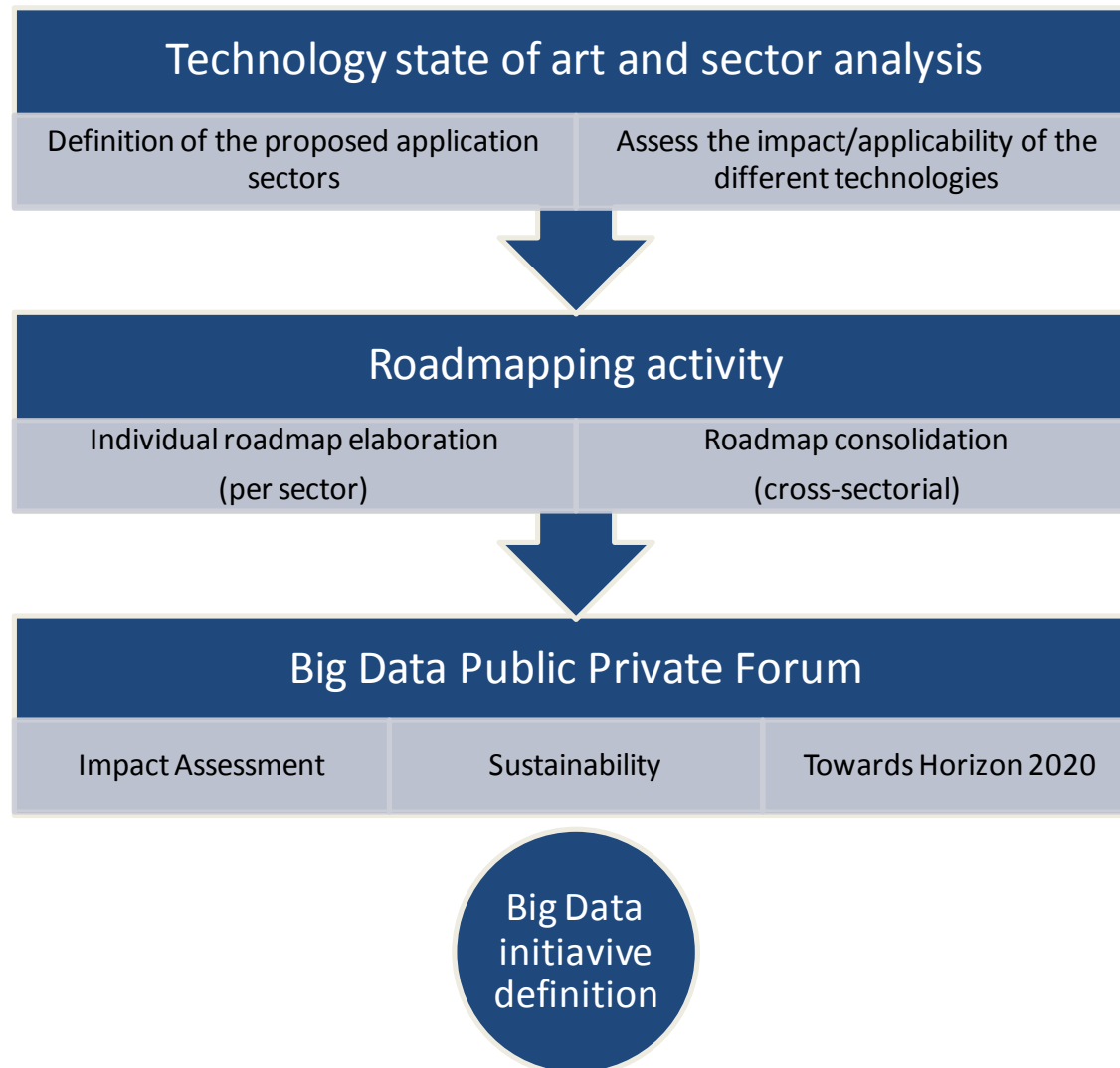


- ▶ Not only technology, but also **business**, policy and regulation;
- ▶ Not only generic plans for research, **but specific plans for adoption** for those sectors that are positioned for greater gains from the use of Big Data;
- ▶ Not only theoretical activities including roadmaps, coordination and dissemination aiming at future actions, but also **actions in the course of the project** to foster understanding and adoption of current technology solutions;
- ▶ Not only development activities in the a limited timeframe (the duration of the project), but the creation of an operational framework (including stakeholder engagement and leadership, organizational structures and technical infrastructure) as a starting point for future work that will go **beyond the project duration**



## Industry driven working groups







- ▶ Presence of the **right profiles** in the consortium to drive this process to the level of influence and impact we are aiming for
- ▶ Involve **stakeholders from EU industry** and officers at the right level
- ▶ An **open philosophy** will be applied to all the documents generated by the project, which will be made public to a **wider community for active contribution and content validation.**
- ▶ BIG is by nature a **cross-disciplinary** initiative with many angles.
- ▶ Reach a coherent and sensible result that satisfies the research community and high level decision makers at the same time. Thus a **top-down and bottom-up approach** have been defined.





What is there (in terms of technology)?

Which is the level of maturity?

Which support actions are needed?

Which metrics should be used?

Which are the impacts ?

What is needed (domain requirements)?

Can it be implemented?

How can it be done?

Which is the actual situation?

What are the residual challenges?

What benefits will it bring to the stakeholders?

What is the time to market?

When can it be done?

What do we want to achieve?

Highlight barriers, strengths, future directions...

Is there any kind of restrictions?

Links between topics (technology/ sectors needs)?

How to fulfill the existing gap (cost/ timeframe...)?

# Atos Research & Innovation

## *Tomás Pariente*

---

**Thank you**



For more information please contact:

**tomas.pariantelobo@atosresearch.eu**

Atos, the Atos logo, Atos Consulting, Atos Worldline, Atos Sphere, Atos Cloud and Atos WorldGrid are registered trademarks of Atos SA. June 2011

© 2011 Atos. Confidential information owned by Atos, to be used by the recipient only. This document, or any part of it, may not be reproduced, copied, circulated and/or distributed nor quoted without prior written approval from Atos.

---

6/26/12